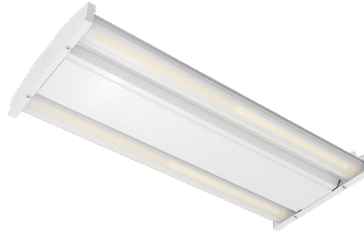
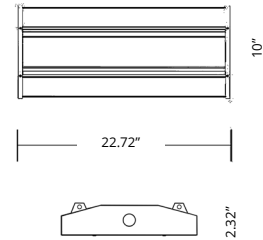


ORIYA II Linear High Bay

The Oriya II Linear High Bay is a sleek, modular design built around an integral extruded-aluminum heat sink. ORIYA II is available in a wide range of power levels, seven in all from 75 to a powerful 400W. The operating temperature range is -40 to 122° F. ORIYA II offers flexible installation options: cable suspension mount, surface mount or pole mount. The long-lasting CREE™ LED chips deliver crisp 4000K or 5000K light with an 80 CRI at 145 lumens per Watt. The L70 life (retention of 70% of original lumen output) is over 50,000 hours.



DIMENSIONS



APPLICATIONS

Commercial

MODEL OPTIONS

Manufacturer	Fixture Type	Wattage	Voltage	Name	Driver	Chip	CCT (X)	Beam Angle (Y)
BSL BIG SHINE LED	HBL Linear High Bay	75W	100-277V G-277-480V Optional	OII	SO Sosen	CR Cree	4000K, 5000K	50x90°, 90°, 120°

TECHNICAL SPECIFICATIONS

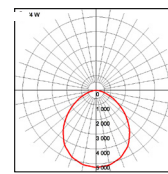
	75W
Lumens	11,250
Efficacy	150
CRI	80 (5000K)
Voltage Input	100-277V
Voltage Output	42V
Amperage	0.72
Hertz	50-60 Hz
THD	10%
Control Options	1-10V Optional (T)
Operating Temp.	-40°~122°F
IP Rating	IP40
IK Level	IK08
Weight	lb
Driver Life	50,000 hrs
L70 Results ¹	50,000 hrs

¹ LM80 and TM21 results are available upon request. Specifications are subject to change without notice.

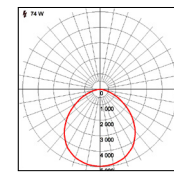
FIELD & BEAM ANGLES

MODEL	Beam Angle	Height vs. Illuminance (ft vs. lx)		
		9.8 ft	19.7 ft	29.5 ft
BSL-HBL75-OII-SOCR-5000K-50x90	50x90	582.3	145.6	64.7
BSL-HBL75-OII-SOCR-5000K-90	90	551.4	137.9	61.3
BSL-HBL75-OII-SOCR-5000K-120	120	407.6	101.9	45.3

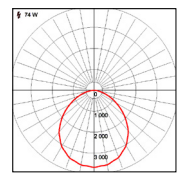
PHOTOMETRICS



75W-5000K-50°x90°



75W-5000K-90°

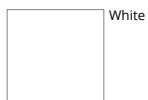


75W-5000K-120°

MOUNTING OPTIONS

Suspended

STANDARD COLOR OPTIONS



White

